



MAVERICK 56A



MAVERICK 56A Model number: 25RGR28563AH20
4 beds • 2 baths • 1568 sq.ft. • 28' width • 56' depth

Our home building facilities invest in continuous product and process improvements. Plans, dimensions, features, materials, specifications and availability are subject to change without notice or obligation. Renderings and floor plans are representative likenesses of our homes and may differ from the actual homes. We invite you to tour a Home Center near you and inspect the highest value in quality housing available or call (706) 861-8640 to speak with a Home Consultant. Copyright 2017, CMH. All rights reserved.

<https://www.claytonringgold.com>

**CLAYTON HOMES-
RINGGOLD**

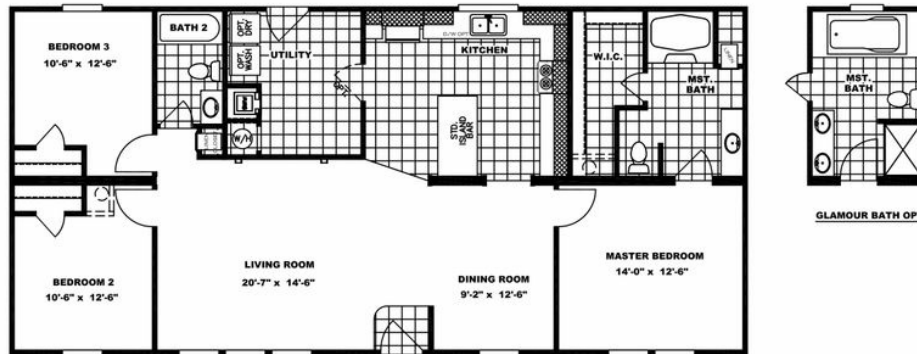
**4303 BATTLEFIELD PARKWAY
RINGGOLD, GA 30736**

Monday - Thursday: 9am - 6pm
Friday: 9am - 6pm
Saturday: 9am - 5pm
Sunday: Closed

(706) 861-8640



MAVERICK 56A



MAVERICK 56A Model number: 25RGR28563AH20

4 beds • 2 baths • 1568 sq.ft. • 28' width • 56' depth

Our home building facilities invest in continuous product and process improvements. Plans, dimensions, features, materials, specifications and availability are subject to change without notice or obligation. Renderings and floor plans are representative likenesses of our homes and may differ from the actual homes. We invite you to tour a Home Center near you and inspect the highest value in quality housing available or call (706) 861-8640 to speak with a Home Consultant. Copyright 2017, CMH. All rights reserved.

<https://www.claytonringgold.com>

CLAYTON HOMES- RINGGOLD

4303 BATTLEFIELD PARKWAY
RINGGOLD, GA 30736

Monday - Thursday: 9am - 6pm
Friday: 9am - 6pm
Saturday: 9am - 5pm
Sunday: Closed

(706) 861-8640